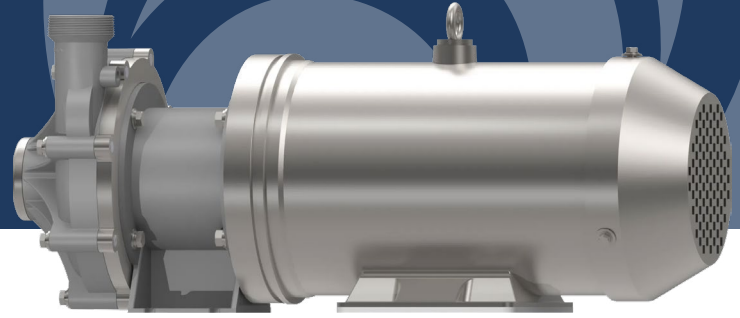


# MC15 Series

Magnetic Drive Centrifugal Pump

2.0" FNPT Suction 2.00" MNPT Discharge  
575 Max Impeller

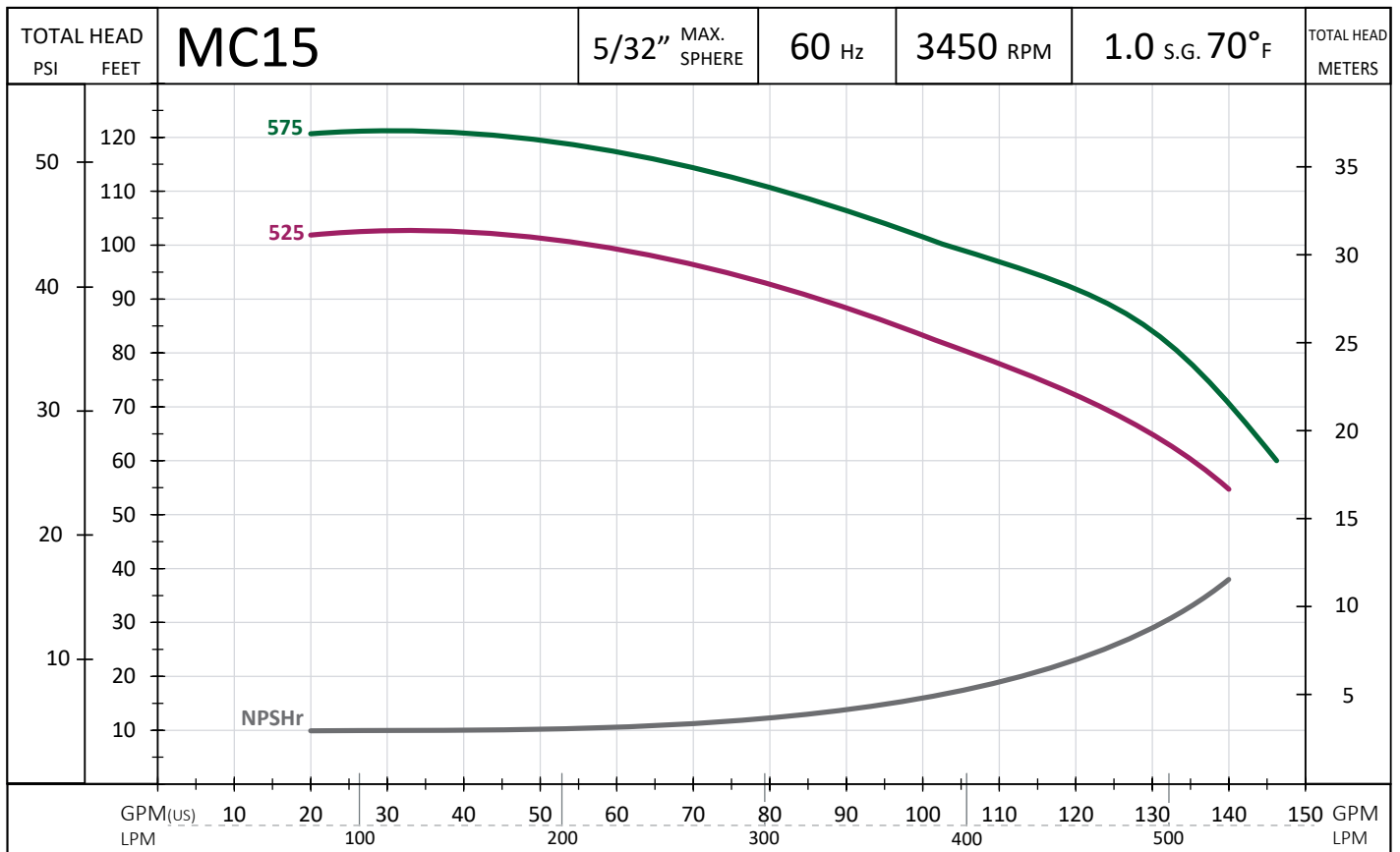


## FEATURES

- Magnetic drive with no shaft seals for long life
- Rugged glass fiber reinforced composite construction will not rust, tarnish, or corrode\*
- 316L-reinforced inlet\*
- Stainless TEFC washdown motor\*
- Stainless-steel hardware\*
- Dual-voltage multi-frequency 60/50 Hz capable motor (wiring dependent)\*

\*Standard offering, may change with different options

## PERFORMANCE CURVE



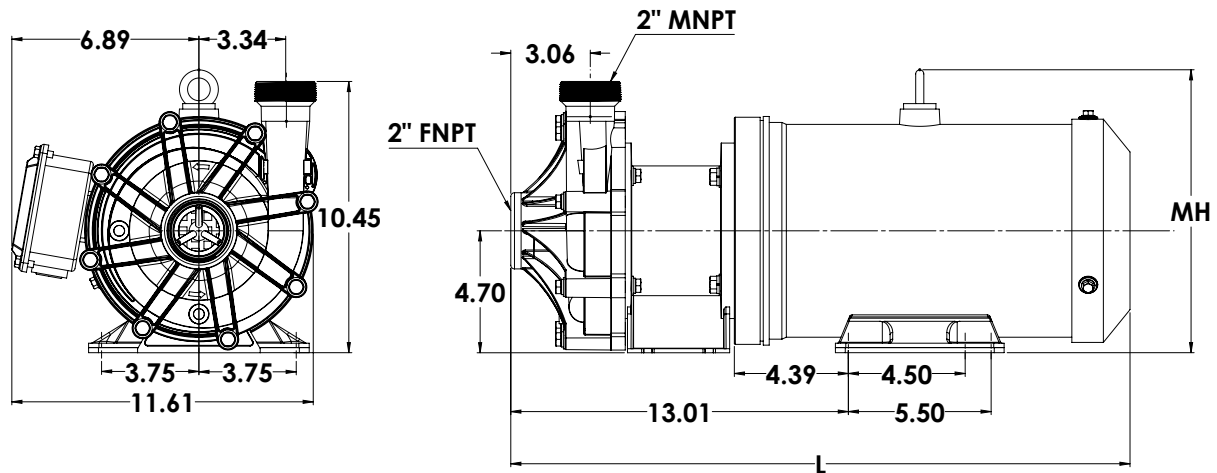
## STANDARD WET MATERIALS

HEAD	GFPP (Polypropylene)
IMPELLER	GFPP (Polypropylene), GFPA (Nylon)
WEAR	Al <sub>2</sub> O <sub>3</sub> , Carbon Graphite, GF MoS <sub>2</sub> , PTFE, SiC
O-RING	FKM

## ADDITIONAL SPECIFICATIONS

MAX FLUID TEMP	180 °F
MAX FLUID VISCOSITY	150 cP

## DIMENSIONS



IMP	HP	TYPE	PH	Volt	Hz	AMPS	(DIM) L	(DIM) MH	BASE PART NUMBER
525	5.0	TEFC	3	230/460	60/50	5.5/11.0	23.84	10.7	MC15-525-23D-5T
575	5.0	TEFC	3	230/460	60/50	5.5/11.0	23.84	10.7	MC15-575-23D-5T



© 2025 Inovotron. All Rights Reserved.

Magnevo Pumps are designed, assembled and quality-control tested at our headquarters in Minneapolis, Minnesota, USA.



(888) 849-6386  
(952) 679-3939



[www.magnevo.com](http://www.magnevo.com)

U.S. and Foreign Patents Pending  
REV A